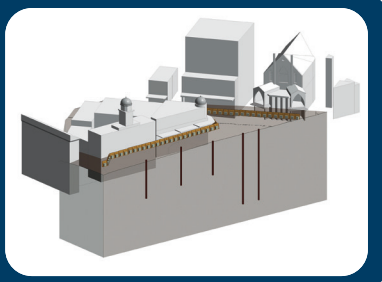


Beresford Square construction

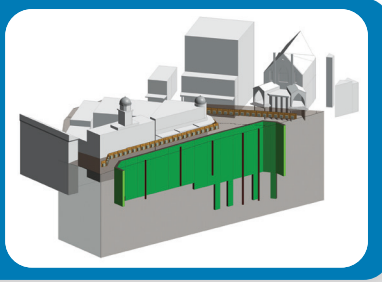
01 September 2020 – October 2020

- Installation of plunge columns, providing temporary support for the floors and superstructure



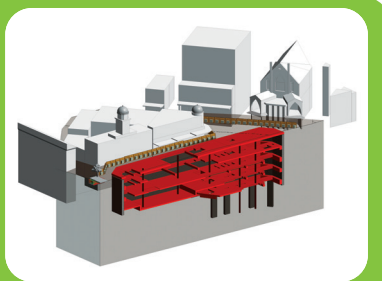
02 October 2020 – March 2021

- Installation of D-walls (Diaphragm walls, shown in green), the station's external walls



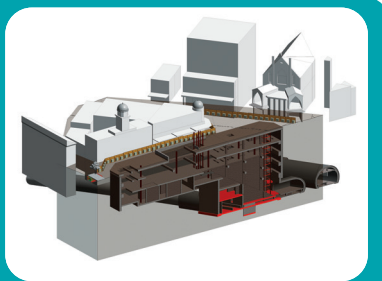
03 March 2021 – March 2022

- Construction of the station's floors and excavation of rock beneath



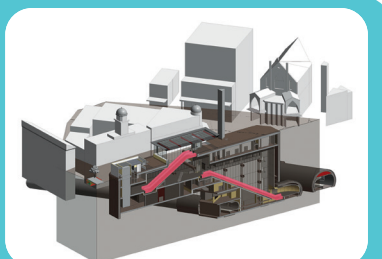
04 March 2022 – March 2023

- Bottom up floor construction
- Completion of columns and walls for station structure
- Start of the station fit-out



05 March 2023 – 2024

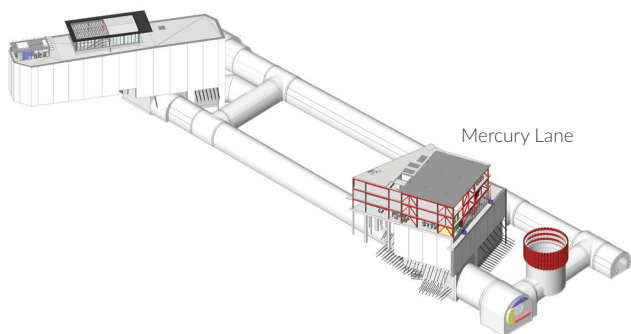
- Station fit-out completed
- Urban realm completed



What to expect from construction

- Delivery of cranes, piling rigs and concrete
- Multiple truck movements
- Set up of bentonite plant (nine red silos) next to Hopetoun Alpha
- Delivery and movement around site of cranes and Diaphragm wall rigs
- Multiple concrete truck deliveries
- Noise and vibration from machinery may be more noticeable than other phases
- Station 'lid' (ground floor slab) poured in May 2021 - construction activities move underground
- Crane movements on slab
- Multiple truck movements to deliver concrete and remove spoil
- Multiple truck movements to deliver concrete and remove spoil
- Crane movements on slab
- Multiple truck movements to deliver equipment
- Crane movements on slab
- Excavation work for tree pits
- Paving works for urban realm area

Beresford Square



We will make every effort to minimise the impact of our works by using noise mats, hoardings, staggering work times and using equipment that generates less noise.

Monitoring systems are in place around the site to measure sound, dust, vibration and ground movement.